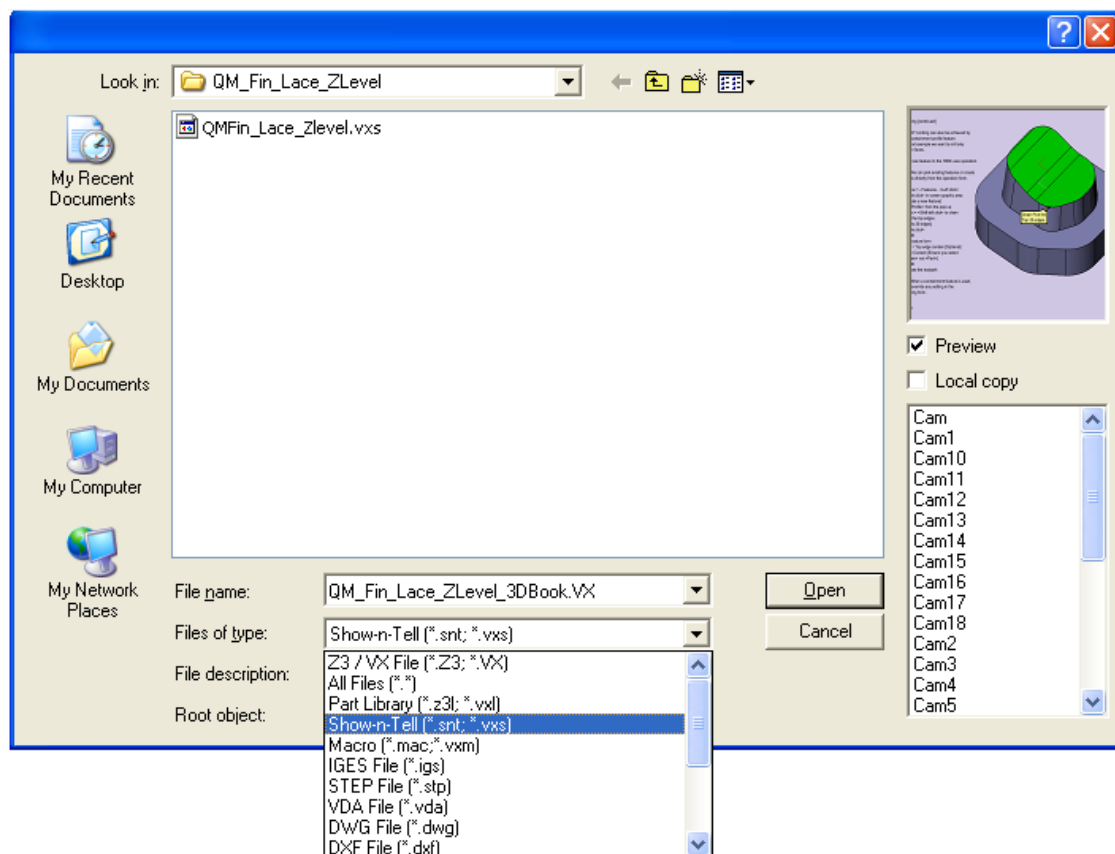


Show-n-Tell™ Tutorial Installation:

- 1) Save or close any open Z3/VX files.
- 2) Extract/Unzip the Tutorial zip files to its own folder.
 - a. (ie. QMFin_Lace_Zlevel.zip to D:\show-n-tell\QM_Fin_Lace_ZLevel)
- 3) Launch ZW3D 2010 or higher.
- 4) Select File Open and navigate to the folder where you extracted the tutorial files.
- 5) Set file of type to Show-n-Tell (*.snt,*.vxs).



- 6) Select the Show-n-Tell file (ie. QMFin_Lace_Zlevel.vxs).
- 7) Choose Open.
- 8) Use the Show-n-Tell toolbar (found in the upper right) to navigate through the steps of the tutorial.

